

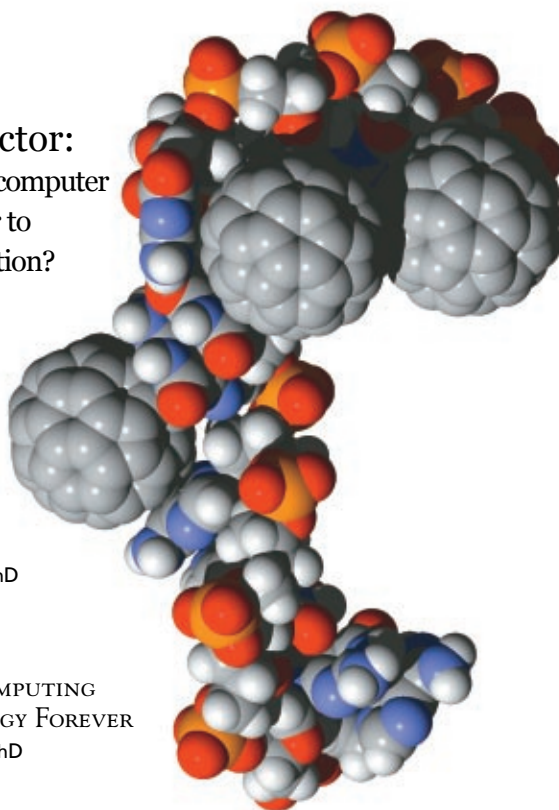
FEATURES

8 The Female Factor: Is the gender gap in computer science carrying over to biomedical computation?

BY KRISTIN COBB, PhD

19 Ramping Up to Multiscale: Taking biomedical modeling to the next level

BY DANA MACKENZIE, PhD



DEPARTMENTS

1 FROM THE EDITOR: COMPUTING HAS CHANGED BIOLOGY FOREVER

BY JOHN C. WOOLEY, PhD

2 NEWS BYTES

- Simulated Buckyballs Bind to DNA BY HANNAH HICKEY
- Where Proteins Go to Work BY LINLEY ERIN HALL
- The Six Faces of E.Coli BY HANNAH HICKEY
- A Powerful Model of Relaxation BY KRISTIN COBB, PhD
- Noisy Genes BY KRISTIN COBB, PhD
- Smoking Addiction Explained BY LINLEY ERIN HALL

27 UNDER THE HOOD: REPRESENTING ROTATIONS WITH QUATERNIONS

BY JAMES COBURN, MS, AND JJ TREY CRISCO, PhD

28 FEATURED LAB: THE INSTITUTE FOR SYSTEMS BIOLOGY

BY KRISTIN COBB, PhD

30 SEEING SCIENCE: DECODING THE DECODER BY KATHARINE MILLER

ON THE COVER:

COVER ART BY RACHEL C. JONES OF AFFILIATED DESIGN

IMAGES:

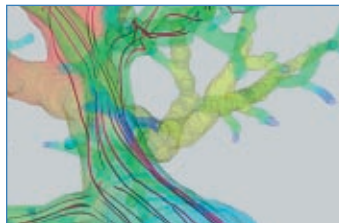
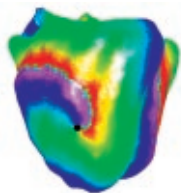
TORSO DIPOLE COURTESY OF A J PULLAN, M L BUIST, AND L K CHENG.

HEART SHOWING FIBER DIRECTIONS, COURTESY OF PETER HUNTER, PhD, BIOENGINEERING INSTITUTE, THE UNIVERSITY OF AUCKLAND, NEW ZEALAND

CONFOCAL IMAGES OF CARDIAC MYOCYTES, COURTESY OF DR. SETH L. ROBIA AND DR. JEFFERY W. WALKER, UNIVERSITY OF WISCONSIN, DEPARTMENT OF PHYSIOLOGY.

CARDIAC MYOCYTES FROM TANIWAKI ET AL., 2006, CELL AND TISSUE RESEARCH, COURTESY OF RENATO MORTARA. WITH KIND PERMISSION OF SPRINGER SCIENCE AND BUSINESS MEDIA

THIN FILAMENT FROM XU ET AL., 1999, BIOPHYSICAL J. 77, 985-992, COURTESY OF WILLIAM LEHMAN, PHD., PROFESSOR OF PHYSIOLOGY AND BIOPHYSICS, BOSTON UNIVERSITY.



Spring 2006

Volume 2, Issue 2

ISSN 1557-3192

Executive Editor

David Paik, PhD

Managing Editor

Katharine Miller

Science Writers

Katharine Miller

Kristin Cobb, PhD

Louisa Dalton

Hannah Hickey

Dana McKenzie, PhD

Linley Erin Hall

Community Contributors

John C. Wooley, PhD

James Coburn, PhD

JJ Trey Crisco, PhD

Layout and Design

Affiliated Design

Printing

Advanced Printing

Editorial Advisory Board

Russ Altman, MD, PhD

Brian Athey, PhD

Andrea Califano, PhD

Valerie Daggett, PhD

Scott Delp, PhD

Eric Jakobsson, PhD

Ron Kikinis, MD

Isaac Kohane, MD, PhD

Mark Musen, MD, PhD

Tamar Schlick, PhD

Jeanette Schmidt, PhD

Michael Sherman

Arthur Toga, PhD

Shoshana Wodak, PhD

John C. Wooley, PhD

**For general inquiries,
subscriptions, or letters to the editor,
visit our website at
www.biomedicalcomputationreview.org**

Office

Biomedical Computation Review
Stanford University
318 Campus Drive
Clark Center Room S170
Stanford, CA 94305-5444

Biomedical Computation Review is published quarterly by Symbios National Center for Biomedical Computing and supported by the National Institutes of Health through the NIH Roadmap for Medical Research Grant U54 GM072970. Information on the National Centers for Biomedical Computing can be obtained from <http://nihroadmap.nih.gov/bioinformatics>. The NIH program and science officers for Symbios are:

Peter Lyster, PhD (NIGMS)

Jennie Larkin, PhD (NHLBI)

Jennifer Couch, PhD (NCI)

Semahat Demir, PhD (NSF)

Charles Friedman, PhD (NLM)

Jerry Li, MD, PhD (NIGMS)

Wen Masters, PhD (NSF)

Richard Morris, PhD (NIAID)

Grace Peng, PhD (NIBIB)

David Thomassen, PhD (DOE)

Ronald J. White, PhD (NASA/USRA)