

FEATURES

8 Human Versus Machine:

Biomedical expertise meets computer automation

BY LOUISA DALTON

16 Computational Biology Catches the Flu:

Modeling the bug, the host, the world

BY KATHARINE MILLER

DEPARTMENTS

- 1** GUEST EDITORIAL:
SHARE AND SHARE ALIKE:
A PROPOSED SET OF GUIDELINES
FOR BOTH DATA AND SOFTWARE
BY RUSS ALTMAN, MD, PhD

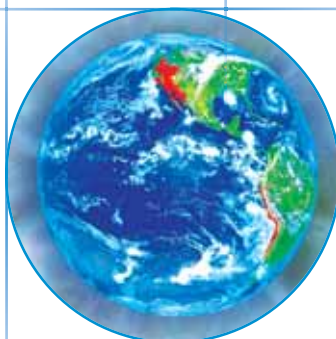
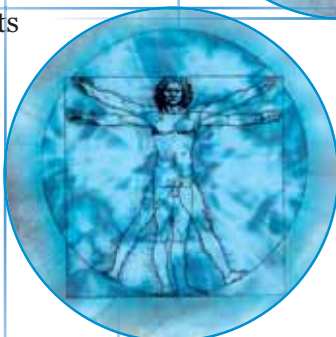
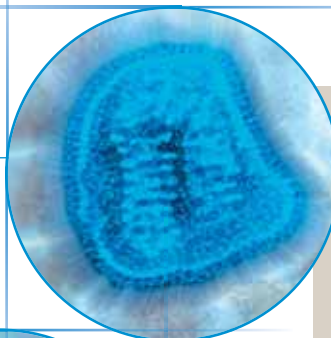
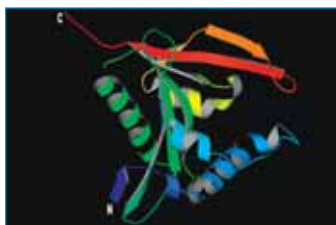
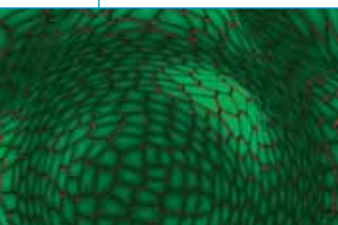
- 2** NEWS BYTES
BY LOUIS BERGERON, MS,
LINLEY ERIN HALL, AND KATHARINE MILLER
- Modeling Sex's (Evolutionary) Appeal
 - Modeling Whorls of Leaves
 - Finding the Best Molecule for the Job
 - Whole Virus Simulation
 - Predicting the Structure of Important Drug Receptors
 - Computation Competition

- 27** UNDER THE HOOD:
COMPLEX STEP DERIVATIVES: HOW DID I MISS THIS?
BY MICHAEL SHERMAN

- 28** FEATURED LAB:
JANELIA FARM: CULTIVATING SCIENTISTS
BY LOUISA DALTON

- 30** SEEING SCIENCE:
MAKING DNA SMILE
BY KATHARINE MILLER

ON THE COVER:
COVER ART BY RACHEL C. JONES OF AFFILIATED DESIGN



Summer 2006

Volume 2, Issue 3
ISSN 1557-3192

Executive Editor

David Paik, PhD

Managing Editor

Katharine Miller

Science Writers

Katharine Miller
Louisa Dalton
Linley Erin Hall
Louis Bergeron, MS

Community Contributors

Russ B. Altman, MD, PhD
Michael Sherman

Layout and Design

Affiliated Design

Printing

Advanced Printing

Editorial Advisory Board

Russ Altman, MD, PhD
Brian Athey, PhD
Andrea Califano, PhD
Valerie Daggett, PhD
Scott Delp, PhD
Eric Jakobsson, PhD
Ron Kikinis, MD
Isaac Kohane, MD, PhD
Mark Musen, MD, PhD
Tamar Schlick, PhD
Jeanette Schmidt, PhD
Michael Sherman
Arthur Toga, PhD
Shoshana Wodak, PhD
John C. Wooley, PhD

For general inquiries,
subscriptions, or letters to the editor,
visit our website at
www.biomedicalcomputationreview.org

Office

Biomedical Computation Review
Stanford University
318 Campus Drive
Clark Center Room S231
Stanford, CA 94305-5444

Biomedical Computation Review is published quarterly by Simbios National Center for Biomedical Computing and supported by the National Institutes of Health through the NIH Roadmap for Medical Research Grant U54 GM072970. Information on the National Centers for Biomedical Computing can be obtained from <http://nihroadmap.nih.gov/bioinformatics>. The NIH program and science officers for Simbios are:

Peter Lyster, PhD (NIGMS)
Jennie Larkin, PhD (NHLBI)
Jennifer Couch, PhD (NCI)
Semahat Demir, PhD (NSF)
Charles Friedman, PhD (NLM)
Jerry Li, MD, PhD (NIGMS)
Wen Masters, PhD (NSF)
Richard Morris, PhD (NIAID)
Grace Peng, PhD (NIBIB)
David Thomassen, PhD (DOE)
Ronald J. White, PhD (NASA/USRA)