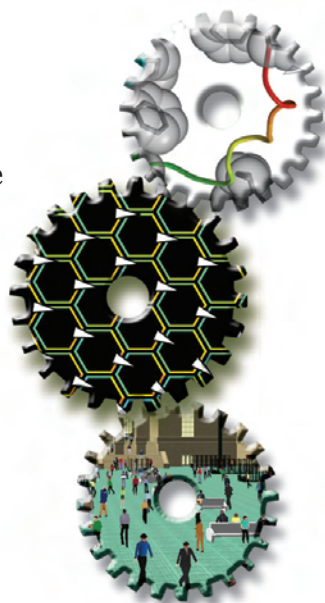


FEATURE

12 Life in Motion: Simulation from Particles to People

BY KATHARINE MILLER

- Jiggling Molecules
- Molecular Movement Takes Time
- The Ratcheting, Springing, Ejecting Ribosome
- The Stretching Cytoskeleton
- One-Way Tissue
- Swimming Larvae in the Natural World
- Crawling Creatures Unplugged
- Running Dinosaurs
- Animating Realistic People on the Go
- Standing Up, Learning, and Taking Trains



DEPARTMENTS

1 GUEST EDITORIAL: MOON SHOTS FOR BIOMEDICAL COMPUTING BY SCOTT DELP, PhD

2 NEWSBYTES

BY AMBER DANCE, PhD, ALISSA POH, ERIN DIGITALE, PhD, HAYLEY RUTGER, JANE LIAW, JOHN CANNON, MADOLYN BOWMAN ROGERS, PhD, MASSIE SANTOS BALLON, RACHEL TOMPA, PhD, AND ROBERTA KWOK

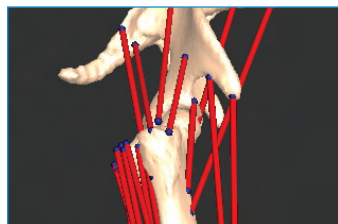
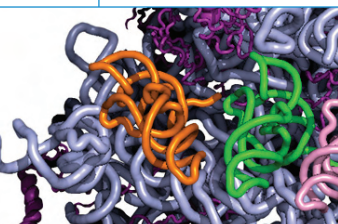
- Sloppy Systems Biology
- Turning Therapeutic Antibodies Into Better Drugs
- Protein Structure Prediction: Getting it Right
- Extinct Sabercat Brought to Life
- Center of Mass Controls Balance
- A Model of Epstein–Barr Virus
- A Digital Human Could Advance Medicine
- Virtual Genomic Scans with Real Data
- Homing in on the Minimum Genome
- Simulating a Scaffold for Bone Growth

11 SIMBIOS NEWS: BCATS – NOT YOUR USUAL BIOMEDICAL COMPUTATION CONFERENCE BY JOY KU, PhD

29 UNDER THE HOOD: ELASTIC COMPUTING, VIRTUALIZATION, AND THE DEMISE OF THE COMMON CLUSTER. BY ALAIN LAEDERACH, PhD

30 SEEING SCIENCE: SIMULATION SIMPLIFIED BY JOY KU, PhD

COVER ART BY
BETH WALKER OF AFFILIATED DESIGN



Winter 2007/08

Volume 4, Issue 1
ISSN 1557-3192

Executive Editor

David Paik, PhD

Managing Editor

Katharine Miller

Associate Editor

Joy Ku, PhD

Science Writers

Katharine Miller	John Cannon
Amber Dance, PhD	Madolyn Bowman
Alissa Poh	Rogers, PhD
Erin Digitale, PhD	Massie Santos Ballon
Hayley Rutger	Rachel Tompa, PhD
Jane Liaw	Roberta Kwok

Community Contributors

Scott Delp, PhD
Joy Ku, PhD
Alain Laederach, PhD

Layout and Design

Affiliated Design

Printing

Advanced Printing

Editorial Advisory Board

Russ Altman, MD, PhD
Brian Athey, PhD
Andrea Califano, PhD
Valerie Daggett, PhD
Scott Delp, PhD
Eric Jakobsson, PhD
Ron Kikinis, MD
Isaac Kohane, MD, PhD
Paul Mitiguy, PhD
Mark Musen, MD, PhD
Tamar Schlick, PhD
Jeanette Schmidt, PhD
Michael Sherman
Arthur Toga, PhD
Shoshana Wodak, PhD
John C. Wooley, PhD

**For general inquiries,
subscriptions, or letters to the editor,
visit our website at
www.biomedicalcomputationreview.org**

Office

Biomedical Computation Review
Stanford University
318 Campus Drive
Clark Center Room S231
Stanford, CA 94305-5444

Biomedical Computation Review is published quarterly by Simbios National Center for Biomedical Computing and supported by the National Institutes of Health through the NIH Roadmap for Medical Research Grant U54 GM072970. Information on the National Centers for Biomedical Computing can be obtained from <http://nihroadmap.nih.gov/bioinformatics>. The NIH program and science officers for Simbios are:

Peter Lyster, PhD (NIGMS)
Jennie Larkin, PhD (NHLBI)
Jennifer Couch, PhD (NCI)
Semahat Demir, PhD (NSF)
Peter Highnam, PhD (NCRR)
Jerry Li, MD, PhD (NIGMS)
Richard Morris, PhD (NIAID)
Grace Peng, PhD (NIBIB)
David Thomassen, PhD (DOE)
Ronald J. White, PhD (NASA/USRA)
Jane Ye, PhD (NLM)
Yuan Liu, PhD (NINDS)