

FEATURES

7 Assembling The Aging Puzzle: Computation Helps Connect the Pieces

BY LOUISA DALTON

16 On Simulating Growth and Form

BY REGINA NUZZO, PhD



DEPARTMENTS

1 FROM THE EDITOR | TAKING THE LEAP: FROM SINGLE GENES TO THE MOLECULAR CHOREOGRAPHY OF THE CELL

BY DR. ANDREA CALIFANO

2 NEWSBYTES

BY LOUISA DALTON, KRISTIN SAINANI, PhD, KATHARINE MILLER,
JULIE J. REHMEYER AND MATTHEW BUSSE, PhD

- Pore Picture Construction
- Cell Division's Surprise Twist
- Modeling the Deformable Body
- Discovering the Bugs Within
- Side Effects *in silico*

24 SIMBIOS NEWS | SIMBODY: AN INSIDER'S VIEW OF BIOLOGICAL STRUCTURES

BY JOY KU, PhD

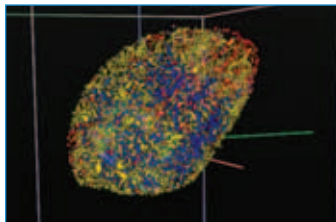
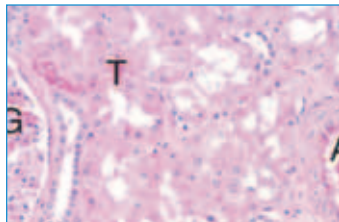
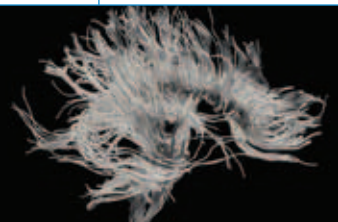
25 UNDER THE HOOD | DIFFUSION TENSOR IMAGING TRACTOGRAPHY: REVEALING CONNECTIVITY IN THE LIVING BRAIN

BY NATHAN HAGEMAN

26 SEEING SCIENCE | THE ENVELOPE PLEASE...

BY KATHARINE MILLER

COVER ART BY
JAMES BENNETT OF AFFILIATED DESIGN



Spring 2008

Volume 4, Issue 2
ISSN 1557-3192

Executive Editor
David Paik, PhD

Managing Editor
Katharine Miller

Associate Editor
Joy Ku, PhD

Science Writers
Katharine Miller
Louisa Dalton
Julie Rehmeyer
Matthew Busse, PhD
Regina Nuzzo, PhD
Kristin Sainani, PhD

Community Contributors
Nathan Hageman
Joy Ku, PhD
Dr. Andrea Califano

Layout and Design
Affiliated Design

Printing
Advanced Printing

Editorial Advisory Board

Russ Altman, MD, PhD
Brian Athey, PhD
Dr. Andrea Califano
Valerie Daggett, PhD
Scott Delp, PhD
Eric Jakobsson, PhD
Ron Kikinis, MD
Isaac Kohane, MD, PhD
Paul Mitiguy, PhD
Mark Musen, MD, PhD
Tamar Schlick, PhD
Jeanette Schmidt, PhD
Michael Sherman
Arthur Toga, PhD
Shoshana Wodak, PhD
John C. Wooley, PhD

**For general inquiries,
subscriptions, or letters to the editor,
visit our website at
www.biomedicalcomputationreview.org**

Office

Biomedical Computation Review
Stanford University
318 Campus Drive
Clark Center Room S231
Stanford, CA 94305-5444

Biomedical Computation Review is published quarterly by Simbios National Center for Biomedical Computing and supported by the National Institutes of Health through the NIH Roadmap for Medical Research Grant U54 GM072970. Information on the National Centers for Biomedical Computing can be obtained from <http://nihroadmap.nih.gov/bioinformatics>. The NIH program and science officers for Simbios are:

Peter Lyster, PhD (NIGMS)
Jennie Larkin, PhD (NHLBI)
Jennifer Couch, PhD (NCI)
Semahat Demir, PhD (NSF)
Peter Highnam, PhD (NCRR)
Jerry Li, MD, PhD (NIGMS)
Richard Morris, PhD (NIAID)
Grace Peng, PhD (NIBIB)
David Thomassen, PhD (DOE)
Ronald J. White, PhD (NASA/USRA)
Jane Ye, PhD (NLM)
Yuan Liu, PhD (NINDS)