



### FEATURES

## 11 Simbios: Bringing Biomedical Simulations to Your Fingertips

BY KATHARINE MILLER  
AND KRISTIN SAINANI, PhD

### DEPARTMENTS

**1 GUEST EDITORIAL |**  
*BIOMEDICAL COMPUTATION REVIEW:*  
THE SIMBIOS FIFTH ANNIVERSARY ISSUE  
BY RUSS ALTMAN, MD, PhD

**3 POINT/COUNTERPOINT |**  
SUPERCOMPUTER VERSUS SUPERCLUSTER  
BY VIJAY PANDE, PhD

**5 NEWSBYTES |** BY ROBERTA FRIEDMAN, PhD,  
LIZ SAVAGE, CHANDRA SHEKHAR, PhD,  
BETH SKWARECKI, AND RACHEL TOMPA, PhD

- Studying Force in 3-D
- Modeling a Gene Therapy Delivery Vehicle
- Different But Equal
- Chromatin Fiber: Zigzag or Solenoid?
- Predicting Cancer Treatment Success
- A Multi-scale Model of Drug Delivery Through the Skin

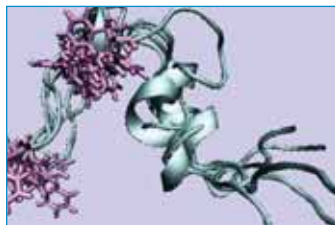
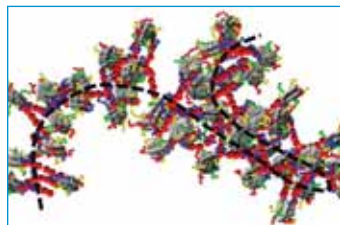
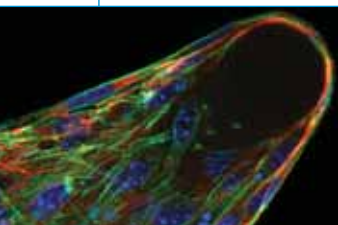
**28 UNDER THE HOOD |** PUTTING TECHNOLOGY IN ITS PLACE  
BY MICHAEL SHERMAN

**30 SEEING SCIENCE |** DEALING WITH A FLOOD  
OF CONFORMATIONS USING MSMBUILDER  
BY JOY KU, PhD

**Cover Art:** Created by Rachel Jones of Wink Design Studio using  
Simbios images and hands image © Glo5 | Dreamstime.com.

**Page 3:** Supercomputer image is © Heizfrosch | Dreamstime.com, black servers image is © Jbron | Dreamstime.com.

**Page 28, 29:** Dashboard image is © Leonid Dedukh | Dreamstime.com, engine image is © Mashe | Dreamstime.com.



**Fall 2009**

Volume 5, Issue 4

ISSN 1557-3192

**Executive Editor** David Paik, PhD

**Managing Editor** Katharine Miller

**Associate Editor** Joy Ku, PhD

#### Science Writers

Roberta Friedman, PhD, Katharine Miller,  
Kristin Sainani, PhD, Liz Savage,  
Chandra Shekhar, PhD, Beth Skwarecki,  
Rachel Tompa, PhD,

#### Community Contributors

Michael Sherman, Vijay Pande, PhD,  
Russ Altman, MD, PhD, Joy Ku, PhD

#### Layout and Design

Wink Design Studio

#### Printing

Advanced Printing

#### Editorial Advisory Board

Russ Altman, MD, PhD, Brian Athey, PhD,  
Dr. Andrea Califano, Valerie Daggett, PhD,  
Scott Delp, PhD, Eric Jakobsson, PhD,  
Ron Kikinis, MD, Isaac Kohane, MD, PhD,  
Mark Musen, MD, PhD, Tamar Schlick, PhD,  
Jeanette Schmidt, PhD, Michael Sherman  
Arthur Toga, PhD, Shoshana Wodak, PhD,  
John C. Wooley, PhD

**For general inquiries,  
subscriptions, or letters to the editor,  
visit our website at**  
[www.biomedicalcomputationreview.org](http://www.biomedicalcomputationreview.org)

#### Office

*Biomedical Computation Review*  
Stanford University  
318 Campus Drive  
Clark Center Room S231  
Stanford, CA 94305-5444

*Biomedical Computation Review*  
is published quarterly by:



The NIH National  
Center for Physics-  
Based Simulation of  
Biological Structures

Publication is made possible through the NIH  
Roadmap for Medical Research Grant U54  
GM072970. Information on the National Centers  
for Biomedical Computing can be obtained from  
<http://nihroadmap.nih.gov/bioinformatics>. The NIH  
program and science officers for Simbios are:

Peter Lyster, PhD (NIGMS)  
Jennie Larkin, PhD (NHLBI)  
Jennifer Couch, PhD (NCI)  
Semahat Demir, PhD (NSF)  
Peter Highnam, PhD (NCRR)  
Jerry Li, MD, PhD (NIGMS)  
Yuan Liu, PhD (NINDS)  
Richard Morris, PhD (NIAID)  
Grace Peng, PhD (NIBIB)  
Nancy Shinowara, PhD (NCMRR)  
David Thomassen, PhD (DOE)  
Jane Ye, PhD (NLM)