

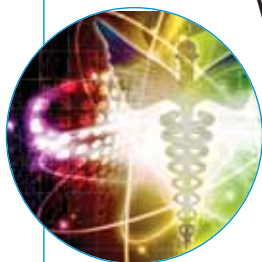
FEATURES

11 Structural Genomics: Exploring the 3D Protein Landscape

BY DENISE CHEN

19 Clinical Decision Support: Providing Quality Healthcare With Help From A Computer

BY KATHARINE MILLER



DEPARTMENTS

- 1 GUEST EDITORIAL |** RECOGNIZING AND ENCOURAGING TIMELY DISSEMINATION
BY AHMET ERDEMIR, PhD

- 2 SIMBIOS NEWS |** A BIG STEP FORWARD FOR OPENSIM
BY JOY P. KU, PhD

- 3 NEWSBYTES |** BY JANELLE WEAVER, PhD, JANE PALMER, PhD, GWYNETH DICKEY, TIA GHOSE, JENNIFER WELSH, MARISSA CEVALLOS, DANIEL STRAIN, SANDRA M. CHUNG, OLGA KUCHMENT, PhD, ADAM MANN

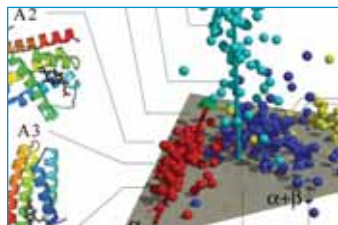
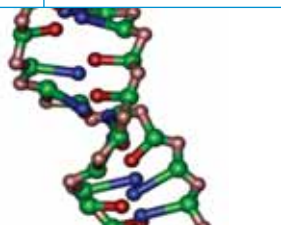
- New Technology Reveals the Genome's 3D Shape
- How DNA Goes A'Courtin'
- Modeling Bacterial Comets
- Cooking Cancer With Gold Nanoshells
- 3D Angiogenesis Modeled
- Improving the Sense of Touch for Surgical Robots
- Conducting Medical Research from Electronic Health Records
- Neuron Models: Simpler Is Better
- Trawling for Drug-Gene Relationships
- Scientific Discovery Through Video Games

- 29 UNDER THE HOOD |** UNDERSTANDING MOLECULAR KINETICS WITH MARKOV STATE MODELS BY GREGORY R. BOWMAN

- 30 SEEING SCIENCE |** FLUID CODE BY KATHARINE MILLER

Cover Art: Created by Rachel Jones of Wink Design Studio. Background protein structures courtesy of the Protein Structure Initiative, NIH, NIGMS. Structure of anthrax protein (BA2930) courtesy of Wladek Minor, professor of molecular physiology and biological physics at University of Virginia, and The Center for Structural Genomics of Infectious Diseases, with funding from NIAID.

Page 19 to 28: Caduceus collage image is © Krishnacreations | Dreamstime.com.



Winter 2009/2010

Volume 6, Issue 1

ISSN 1557-3192

Executive Editor David Paik, PhD

Managing Editor Katharine Miller

Associate Editor Joy Ku, PhD

Science Writers

Denise Chen, Katharine Miller, Janelle Weaver, PhD, Jane Palmer, PhD, Gwyneth Dickey, Tia Ghose, Jennifer Welsh, Marissa Cevallos, Daniel Strain, Sandra M. Chung, Olga Kuchment, PhD, Adam Mann

Community Contributors

Ahmet Erdemir, PhD, Joy Ku, PhD, Gregory R. Bowman

Layout and Design

Wink Design Studio

Printing

Advanced Printing

Editorial Advisory Board

Russ Altman, MD, PhD, Brian Athey, PhD, Dr. Andrea Califano, Valerie Daggett, PhD, Scott Delp, PhD, Eric Jakobsson, PhD, Ron Kikinis, MD, Isaac Kohane, MD, PhD, Mark Musen, MD, PhD, Tamar Schlick, PhD, Jeanette Schmidt, PhD, Michael Sherman, Arthur Toga, PhD, Shoshana Wodak, PhD, John C. Wooley, PhD

For general inquiries, subscriptions, or letters to the editor, visit our website at
www.biomedicalcomputationreview.org

Office

Biomedical Computation Review
Stanford University
318 Campus Drive
Clark Center Room S231
Stanford, CA 94305-5444

Biomedical Computation Review is published quarterly by:



The NIH National Center for Physics-Based Simulation of Biological Structures

Publication is made possible through the NIH Roadmap for Medical Research Grant U54 GM072970. Information on the National Centers for Biomedical Computing can be obtained from <http://nihroadmap.nih.gov/bioinformatics>. The NIH program and science officers for Simbios are:

Peter Lyster, PhD (NIGMS)
Jennie Larkin, PhD (NHLBI)
Jennifer Couch, PhD (NCI)
Semahat Demir, PhD (NSF)
Jim Gnadl, PhD (NINDS)
Peter Highnam, PhD (NCRR)
Jerry Li, MD, PhD (NIGMS)
Yuan Liu, PhD (NINDS)
Richard Morris, PhD (NIAID)
Grace Peng, PhD (NIBIB)
Nancy Shinowara, PhD (NCMRR)
David Thomassen, PhD (DOE)
Jane Ye, PhD (NLM)